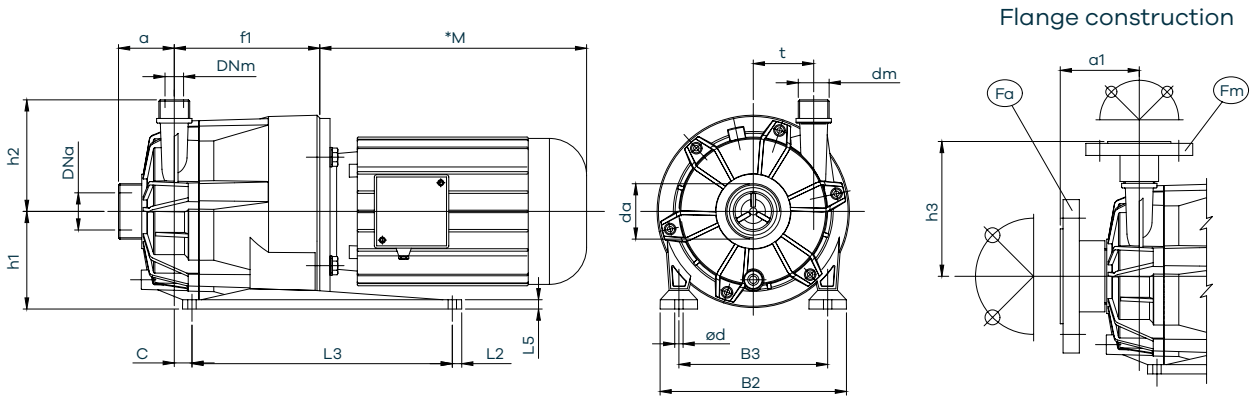


# STN 30-40 | motor 80/90

## Overall dimensions



### Pump dimensions

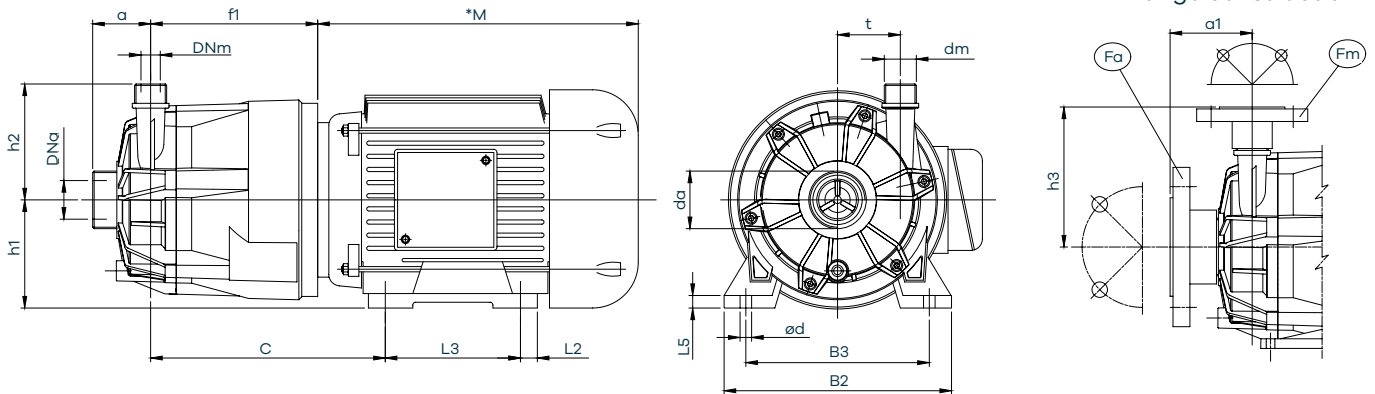
Model	STN 30	STN 40
DN <sub>a</sub>	40	50
DN <sub>m</sub>	20	32
Fa	<b>DN50</b> UNI EN 1092-1 PN 10RF or ANSI 150	<b>DN65</b> UNI EN 1092-1 PN 10RF or ANSI 150
Fm	<b>DN25</b> UNI EN 1092-1 PN 10RF or ANSI 150	<b>DN40</b> UNI EN 1092-1 PN 10RF or ANSI 150
da	G 2"	G 2" 3/4
dm	G 1"	G 1" 1/2
a (mm)	60	67
a <sub>1</sub> (mm)	85	85
B <sub>2</sub> (mm)	200	200
B <sub>3</sub> (mm)	160	160
C (mm)	19	19
Ød	9	9
h <sub>1</sub> (mm)	105	105
h <sub>2</sub> (mm)	120	120
h <sub>3</sub> (mm)	145	145
L <sub>2</sub> (mm)	10	10
L <sub>3</sub> (mm)	280	280
L <sub>5</sub> (mm)	10	10
t (mm)	65	65

f <sub>1</sub>	STN 30	STN 40
<b>Motor dimensions</b>		
<b>80 (mm)</b>	156,5	156,5
<b>90 (mm)</b>	156,5	156,5
<b>Motor shape</b>	<b>B5</b>	<b>B5</b>
<b>Pump weight</b> (without motor)	13	13

\* The M dimension is according to the installed motor

# STN 30-40 | motor 100/112

## Overall dimensions



### Pump dimensions

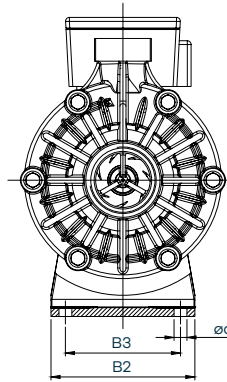
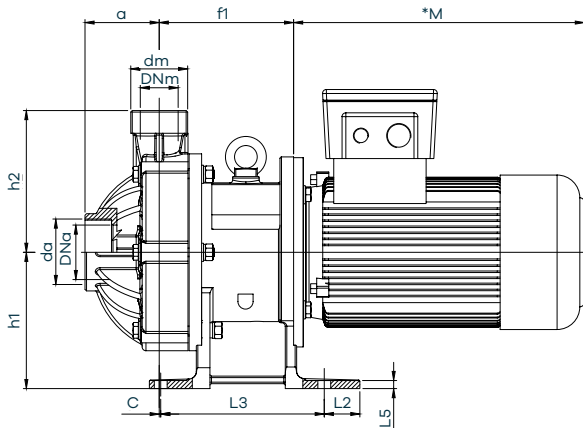
Model	STN 30	STN 40
DNa	40	50
DNm	20	32
Fa	<b>DN50</b>	<b>DN65</b>
	UNI EN 1092-1 PN 10RF or ANSI 150	
Fm	<b>DN25</b>	<b>DN40</b>
	UNI EN 1092-1 PN 10RF or ANSI 150	
da	G 2"	G 2" 3/4
dm	G 1"	G 1"1/2
a (mm)	60	67
a1 (mm)	85	85
Ød	12	12
h2 (mm)	120	120
h3 (mm)	145	145
L2 (mm)	15	17
L3 (mm)	140	140
L5 (mm)	10	12
t (mm)	65	65

f1	Motor dimensions	
	STN 30	STN 40
B2	100 (mm)	200
	112 (mm)	240
B3	100 (mm)	160
	112 (mm)	190
C	100 (mm)	236
	112 (mm)	243
h1	100 (mm)	100
	112 (mm)	112
f1	100 (mm)	173
	112 (mm)	173
Motor shape	<b>B3/B14</b>	<b>B3/B14</b>
Pump weight (without motor)	16	16

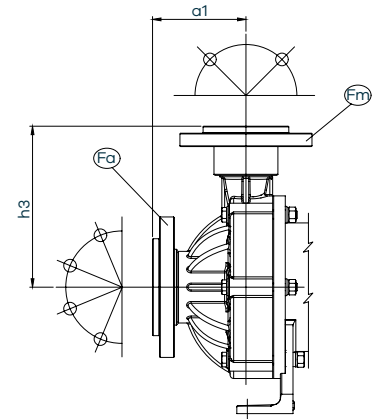
\* The M dimension is according to the installed motor

# STN 70

## Overall dimensions



Flange construction



## Pump dimensions

<b>Model</b>	<b>STN 70</b>
<b>DNa</b>	80
<b>DNm</b>	50
<b>Fa</b>	<b>DN80</b> UNI EN 1092-1 PN 10RF or ANSI 150
<b>Fm</b>	<b>DN65</b> UNI EN 1092-1 PN 10RF or ANSI 150
<b>da</b>	G 3"
<b>dm</b>	G 2"1/2
<b>a (mm)</b>	98
<b>a1 (mm)</b>	133
<b>B2 (mm)</b>	190
<b>B3 (mm)</b>	152
<b>C (mm)</b>	2
<b>ød</b>	17
<b>h1 (mm)</b>	180
<b>h2 (mm)</b>	187
<b>h3 (mm)</b>	229
<b>L2 (mm)</b>	47
<b>L3 (mm)</b>	216
<b>L5 (mm)</b>	10
<b>t (mm)</b>	0

## f1

Motor dimensions	STN 70
<b>80 (mm)</b>	178
<b>90 (mm)</b>	178
<b>100 (mm)</b>	178
<b>112 (mm)</b>	178
<b>132 (mm)</b>	196
<b>Motor shape</b>	<b>B5</b>
<b>Pump weight (without motor)</b>	32

\* The M dimension is according to the installed motor