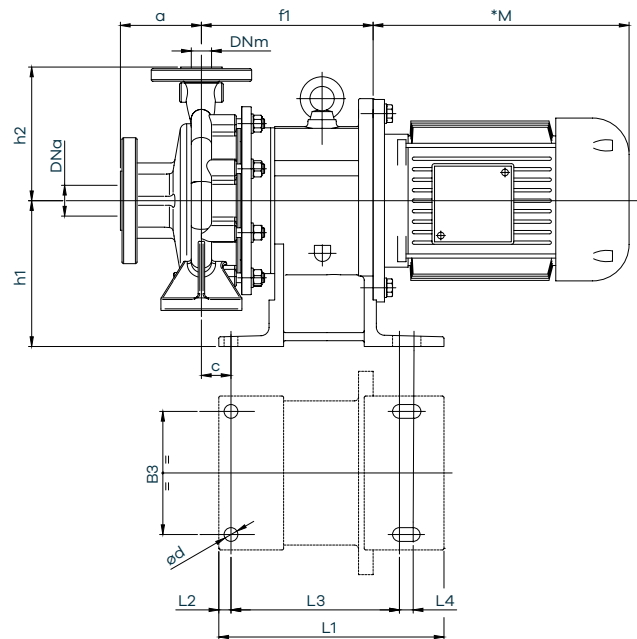
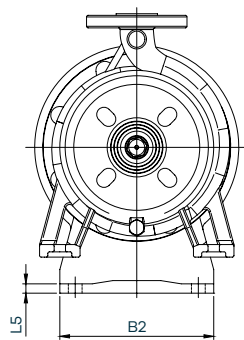


# ETS

## Dimensioni d'ingombro



### Dimensioni pompa

Modello	ETS 30	ETS 40	ETS 50	ETS 70
<b>DNa**</b>	32	40	40	50
<b>DNm**</b>	25	32	25	32
<b>a (mm)</b>	52	78	100	80
<b>B2 (mm)</b>	190	190	190	190
<b>B3 (mm)</b>	152	152	152	152
<b>C (mm)</b>	20	22	36.5	36.5
<b>Ød (mm)</b>	17	17	17	17
<b>h1 (mm)</b>	180	180	180	180
<b>h2 (mm)</b>	121	146	165	160
<b>L1 (mm)</b>	277	277	277	277
<b>L2 (mm)</b>	15	15	15	15
<b>L3 (mm)</b>	208	208	208	208
<b>L4 (mm)</b>	17	17	17	17
<b>L5 (mm)</b>	11,5	11,5	11,5	11,5

### Dimensioni basamento

Modello	ETS 30	ETS 40	ETS 50	ETS 70
<b>80 mm</b>	196	196	212	212
<b>90 mm</b>	196	196	212	212
<b>100 mm</b>	214	214	212	212
<b>112 mm</b>	214	214	212	212
<b>132 mm</b>	-	-	230	230
<b>Forma motore</b>	<b>B5</b>	<b>B5</b>	<b>B5</b>	<b>B5</b>
<b>Peso pompa</b> (senza motore)	35	38	45	45

\*La dimensione M è in accordo al motore installato

\*\*UNI EN 1092-1 PN 16RF slotted to ANSI 150