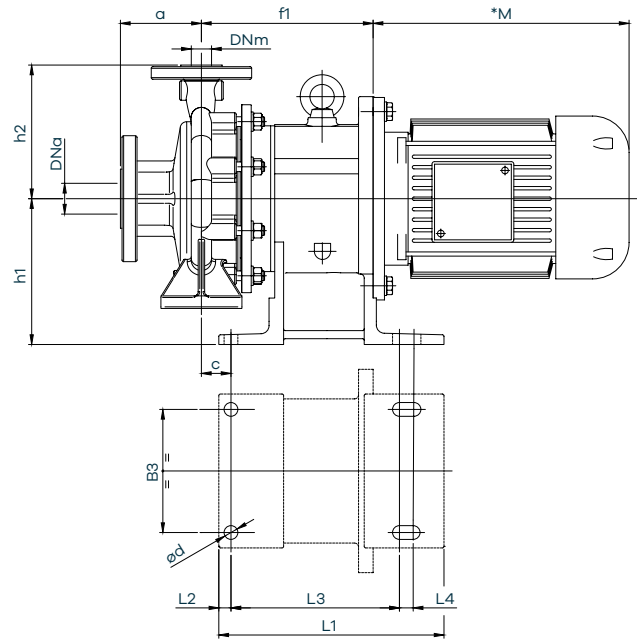
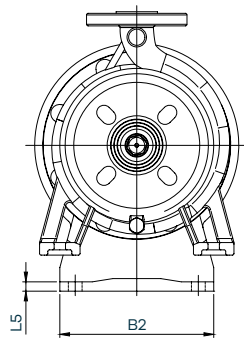


ETS

Overall dimensions



Pump dimensions

Model	ETS 30	ETS 40	ETS 50	ETS 70
DNa**	32	40	40	50
DNm**	25	32	25	32
a (mm)	52	78	100	80
B2 (mm)	190	190	190	190
B3 (mm)	152	152	152	152
C (mm)	20	22	36.5	36.5
Ød (mm)	17	17	17	17
h1 (mm)	180	180	180	180
h2 (mm)	121	146	165	160
L1 (mm)	277	277	277	277
L2 (mm)	15	15	15	15
L3 (mm)	208	208	208	208
L4 (mm)	17	17	17	17
L5 (mm)	11,5	11,5	11,5	11,5

Base dimensions

Model	ETS 30	ETS 40	ETS 50	ETS 70
80 mm	196	196	212	212
90 mm	196	196	212	212
100 mm	214	214	212	212
112 mm	214	214	212	212
132 mm	-	-	230	230
Motor shape	B5	B5	B5	B5
Pump weight (without motor)	35	38	45	45

*The M dimension depends on the motor installed

**UNI EN 1092-1 PN 16RF slotted to ANSI 150